

Radial spherical plain bearings GE..HO 2RS

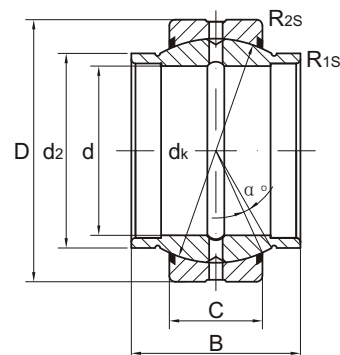


向心关节轴承

Maintenance required 需润滑

- Outer ring with single split in axial direction.
- Inner ring with cylindrical extensions at both sides.
- Lubricating grooves and holes in the outer and inner rings
- Outer ring with lip seals in both sides.
- Both outer and inner rings are properly phosphate treated.

- 外圈有一道轴向缝。
- 内圈两端有伸出圆筒。
- 内圈和外圈有润滑油槽和油孔。
- 外圈两面带密封圈。
- 内外圈表面磷化处理。



Part No. 型号	Dimensions 尺寸mm									Load ratings 负荷KN		Weight 重量Kg
	d	d ₂	D	B	C	d _k	R _{1s} min	R _{2s} min	α ≈	dyn.动 C _d	stat.静 C _s	
GE 17 HO 2RS	17	21	30	21	10	25	0.2	0.3	3	21.2	106	0.04
GE 20 HO 2RS	20	24	35	24	12	29	0.2	0.3	3	30	146	0.069
GE 25 HO 2RS	25	29	42	29	16	35.5	0.2	0.6	3	48	240	0.12
GE 30 HO 2RS	30	34	47	30	18	40.7	0.2	0.6	3	62	310	0.15
GE 35 HO 2RS	35	40	55	35	20	47	0.3	1.0	3	80	400	0.26
GE 40 HO 2RS	40	45	62	38	22	53	0.3	1.0	3	100	500	0.32
GE 45 HO 2RS	45	52	68	40	25	60	0.3	1.0	3	127	640	0.43
GE 50 HO 2RS	50	57	75	43	28	66	0.3	1.0	3	156	780	0.55
GE 60 HO 2RS	60	68	90	54	36	80	0.3	1.0	3	245	1220	1.10
GE 70 HO 2RS	70	78	105	65	40	92	0.3	1.0	3	315	1560	1.60
GE 80 HO 2RS	80	90	120	74	45	105	0.3	1.0	3	400	2000	2.50